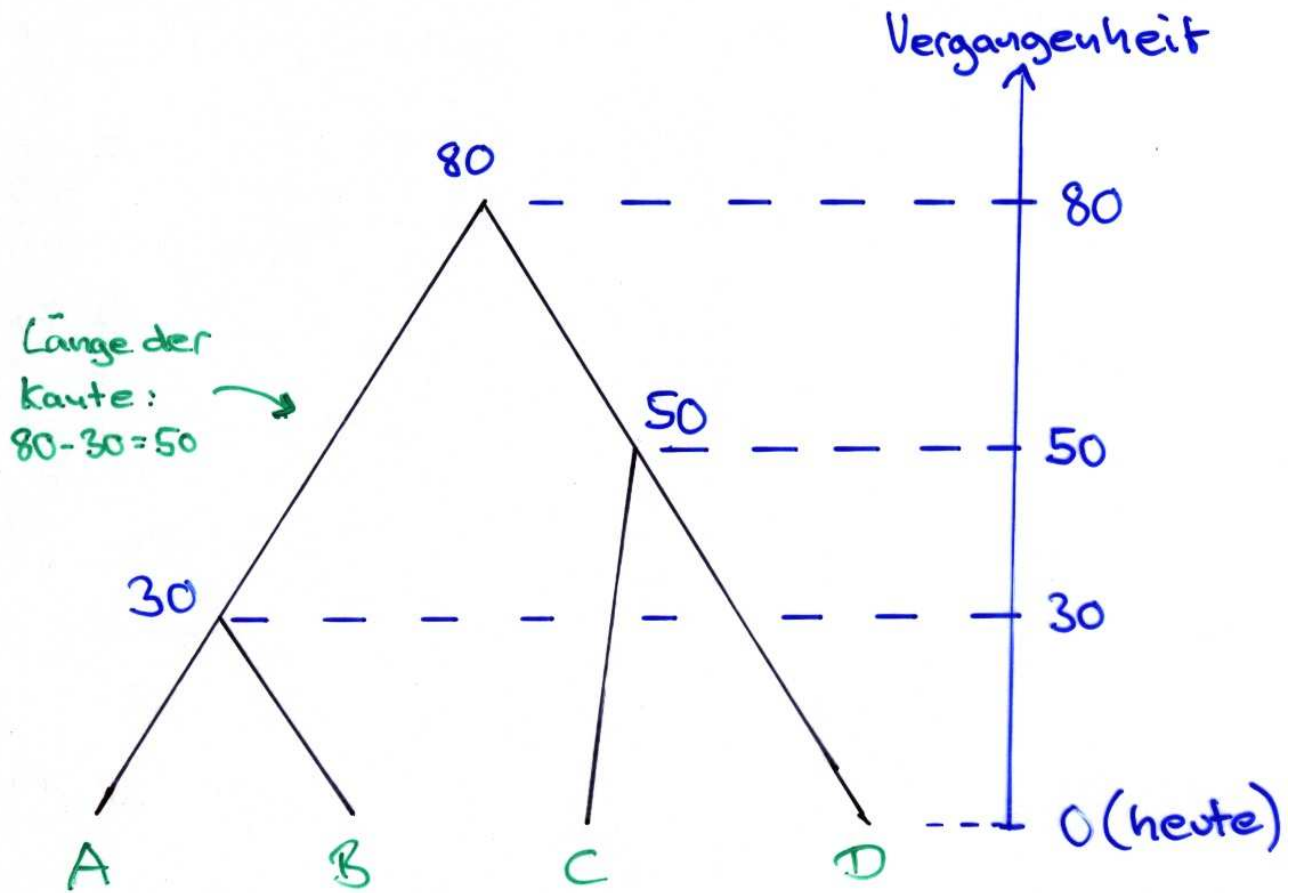
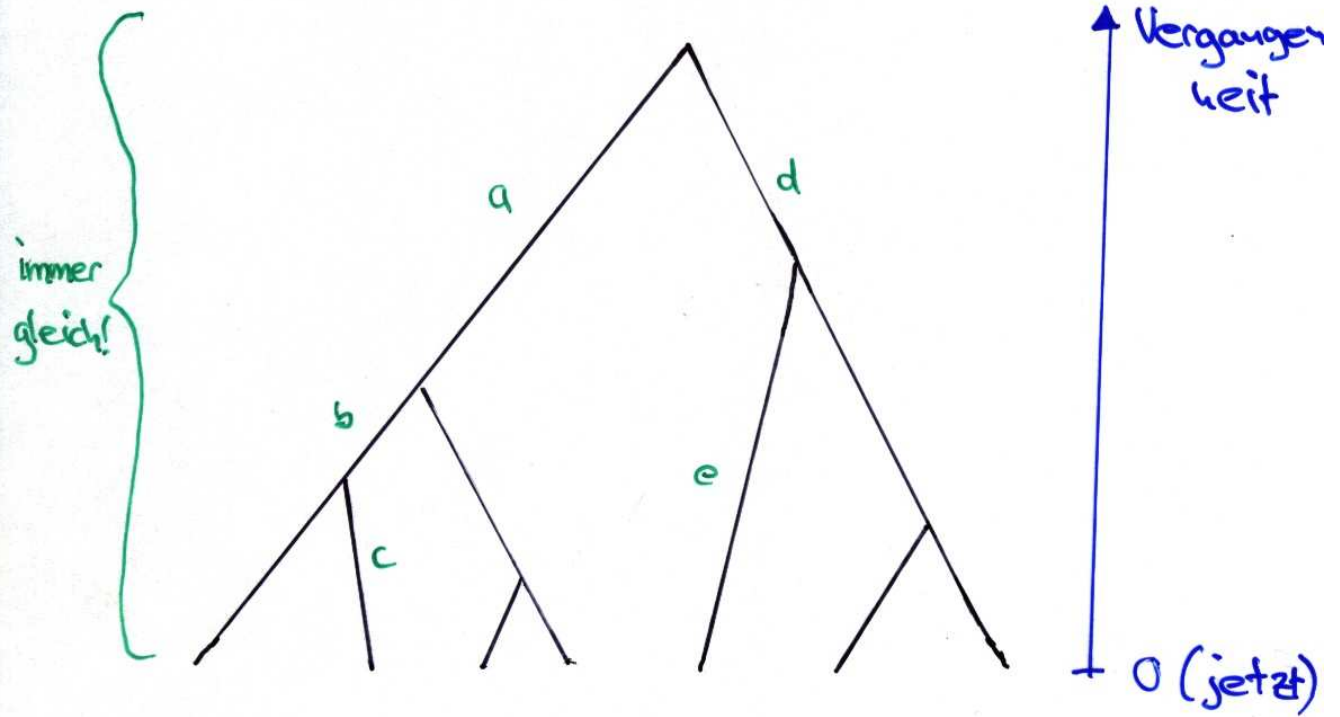


A	B	C	D	E	
0	3	6	9	11	A
	0	7	10	12	B
		0	5	7	C
			0	8	D
				0	E

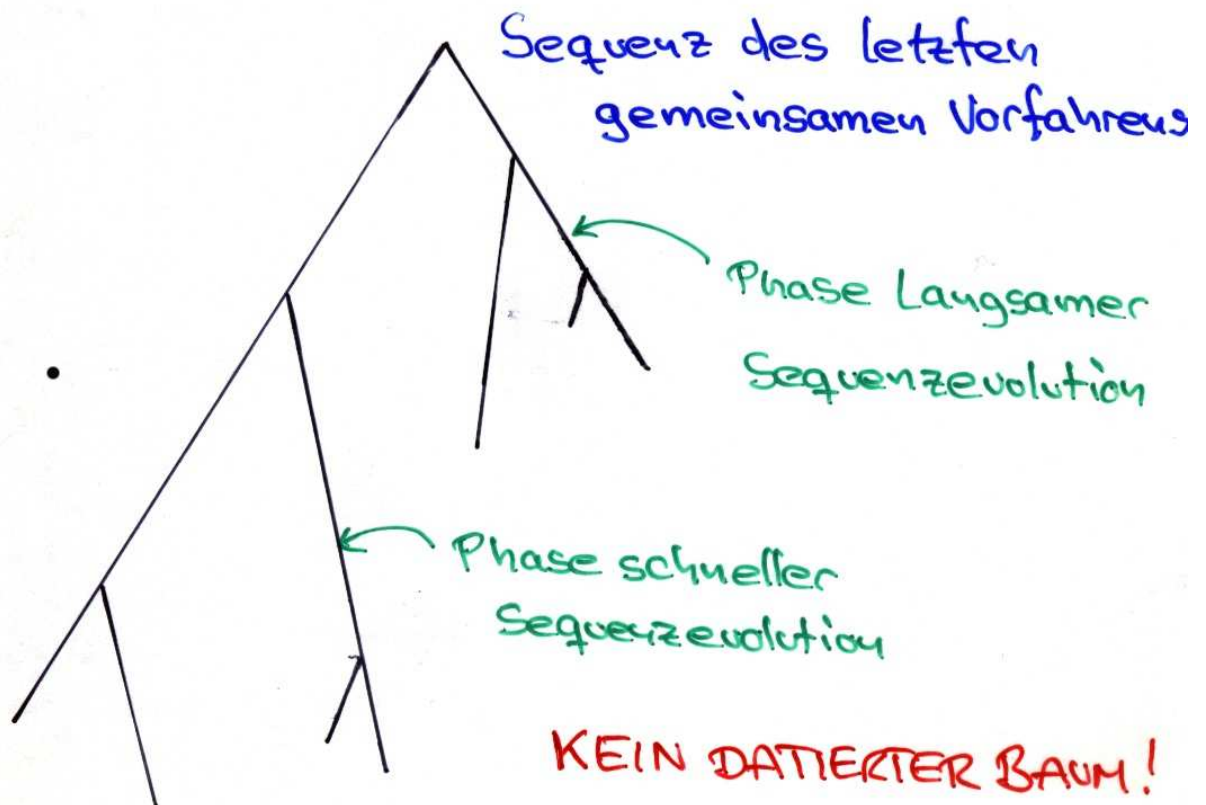
Datierte Wurzelbäume



Hypothese der molekularen Uhr



$$a+b+c = d+e = \dots$$



Symbolische Ultrametrik

Verbotene Konfigurationen

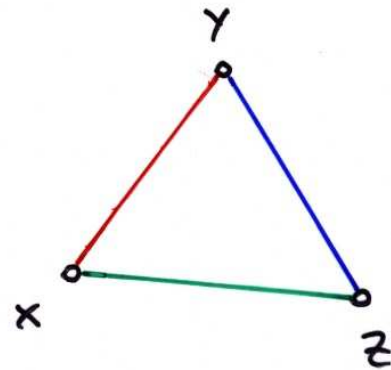
(i)

x	y	
○	●	x
●	○	y

Symmetrie

(ii)

x	y	z	
○	●	●	x
	○	●	y
		○	z



(iii)

w	x	y	z	
○	●	●	●	w
	○	●	●	x
		○	●	y
			○	z

