

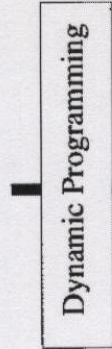
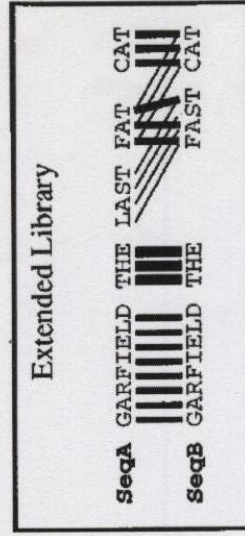
Erweitern der Alignment-Sammlung

Ursprüngliche Alignment-Sammlung

SeqA	GARFIELD THE LAST FAT CAT	Prim. Weight = 88	SeqB	GARFIELD THE VERY FAST CAT	Prim. Weight = 100
SeqB	GARFIELD THE FAST CAT		SeqC	GARFIELD THE FA-T CAT	
SeqA	GARFIELD THE LAST FA-T CAT	Prim. Weight = 77	SeqD	GARFIELD THE VERY FA-T CAT	Prim. Weight = 100
SeqC	GARFIELD THE VERY FAST CAT		SeqD	GARFIELD THE FA-T CAT	
SeqA	GARFIELD THE LAST FAT CAT	Prim. Weight = 100	SeqC	GARFIELD THE VERY FAST CAT	Prim. Weight = 100
SeqD	GARFIELD THE FAST CAT		SeqD	GARFIELD THE FA-T CAT	

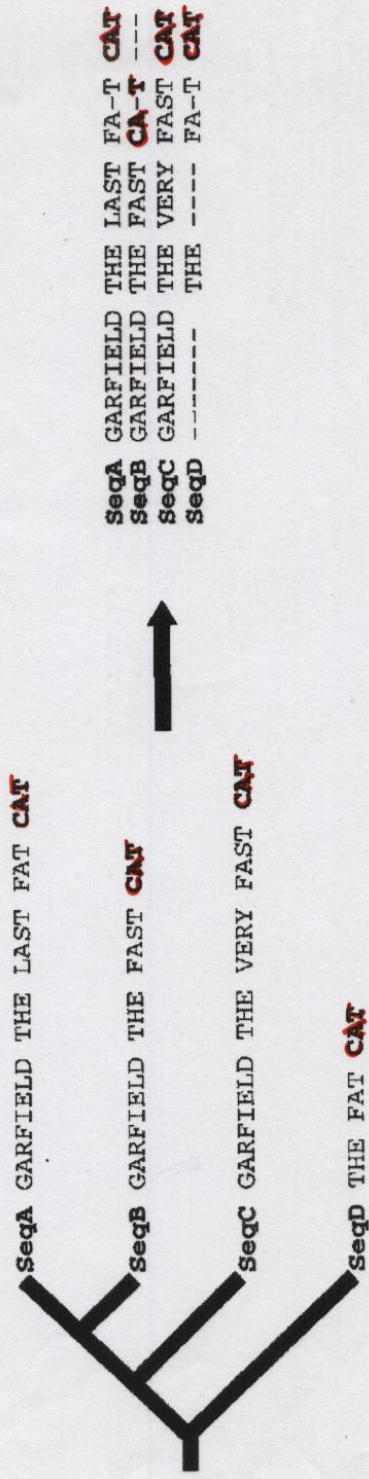
Erweiterte Alignment-Sammlung

SeqA	GARFIELD THE LAST FAT CAT	Weight = 88
SeqB	GARFIELD THE FAST CAT	
SeqA	GARFIELD THE LAST FAT CAT	Weight = 77
SeqC	GARFIELD THE VERY FAST CAT	
SeqB	GARFIELD THE FAST CAT	
Seq1	GARFIELD THE LAST FAT CAT	Weight = 100
SeqD	GARFIELD THE VERY FAST CAT	
SeqB	GARFIELD THE FAST CAT	



SeqA GARFIELD THE LAST FA-T CAT
SeqB GARFIELD THE ---- FAST CAT

Reguläres progressives Alignment



- SeqA und SeqB werden zu Beginn des progressiven Alignments falsch aligniert
- Kann in folgenden Schritten nicht mehr korrigiert werden